

A photograph of two business professionals in a meeting. One person is holding a pen over a document, while the other has their hands clasped. The image is framed with a red border.

# BUSINESS COACHING SERVICE

A SERVICE BY:

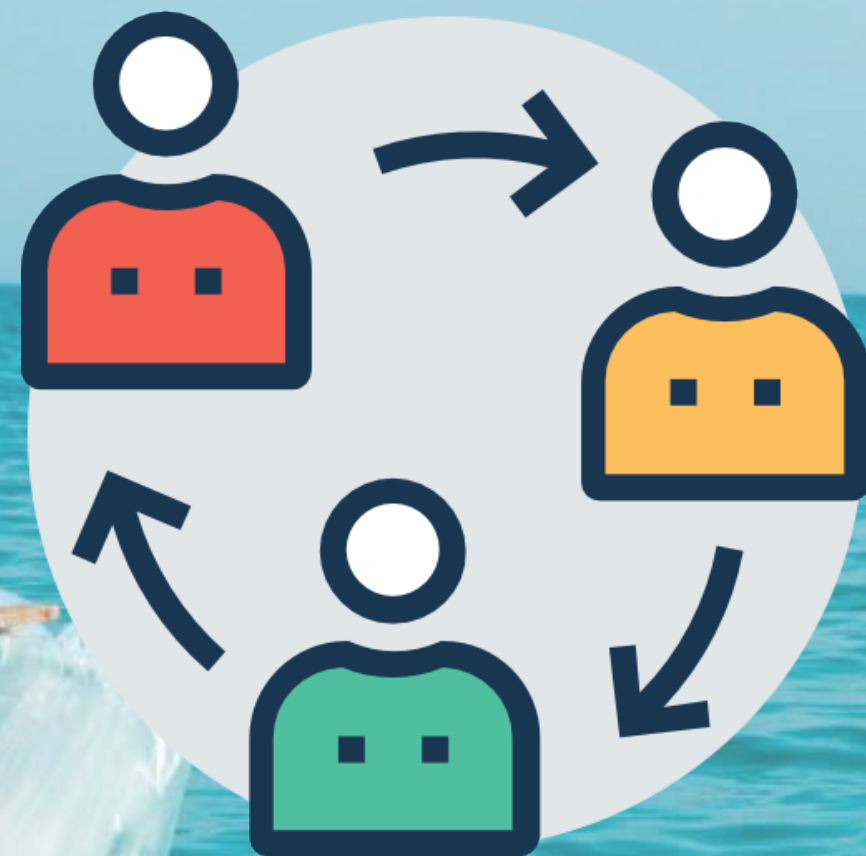


**REDROCK**  
International

# GET TO KNOW RED ROCK INTERNATIONAL



**UK-Based**



**Experiential**



**Tailor-Made**

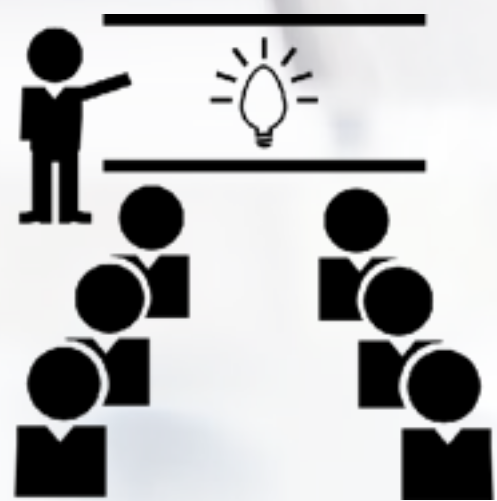
# HOW WE DO WHAT WE DO

We develop people's skills, habits, behaviors and relationships through **EXPERIENCE**.

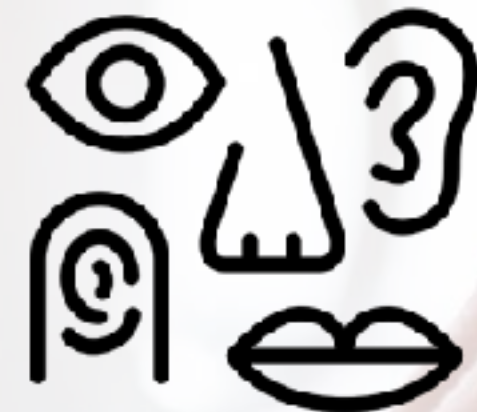
We have an ambitious goal for our trainings - **TRANSFORMATION**.

TO DO THIS WE USE THE TERC MODEL:

**TEACH**



**EXPERIENCE**



**REVIEW**



**COACH**



**EXPERIENTIAL • TAILORED • INTERNATIONAL**

# ONE-ON-ONE COACHING SESSIONS

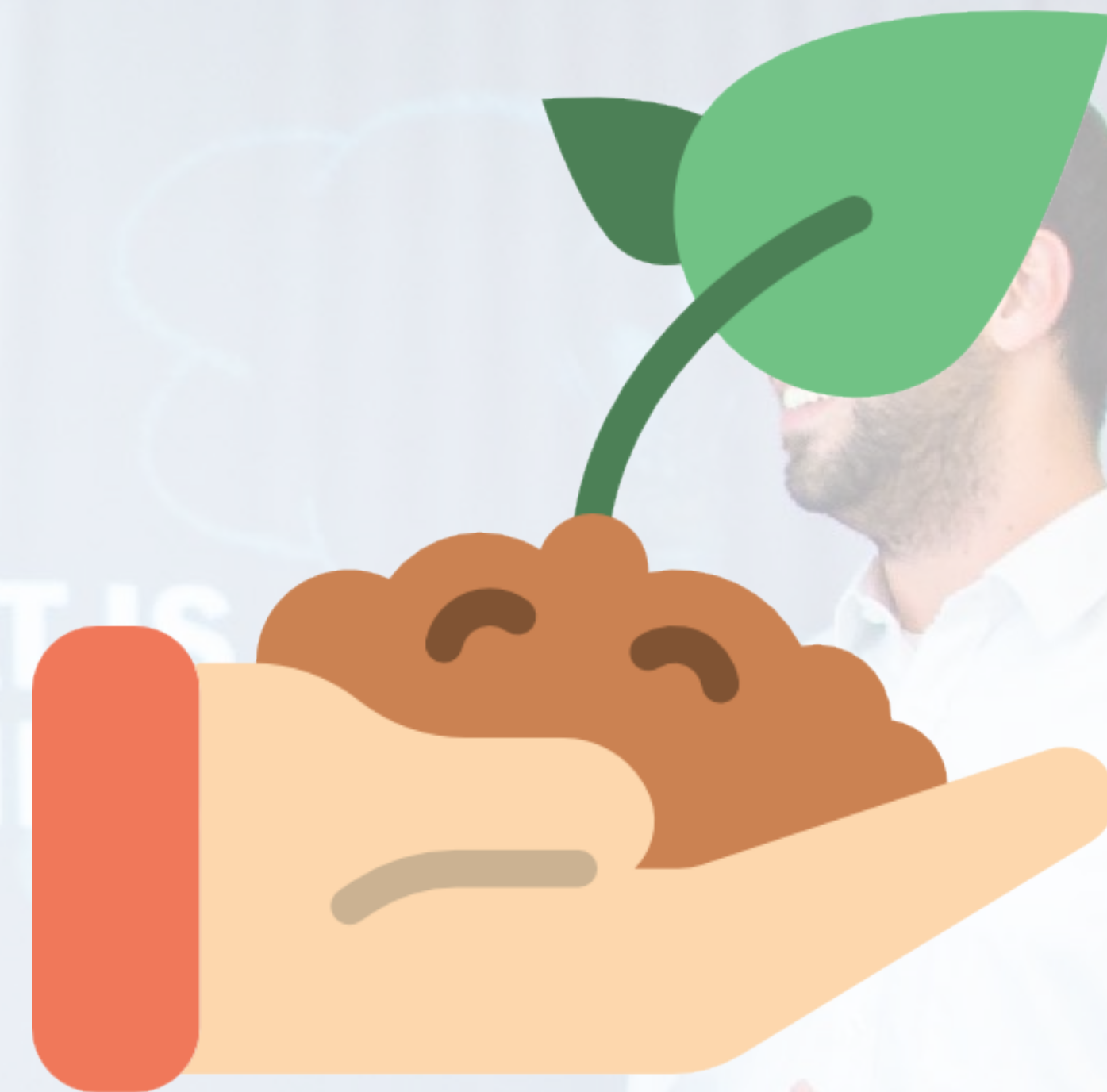
Red Rock International (RRI) has proliferated its services and is now boasting to have **four certified coaches** with degrees varying from **Life Coaching, Certified Career Coaching and Certified Professional Coaching.**

In every entity in the world, you will have employees that are talented, exceptional and unique, it would be unfortunate not to develop them, shed light on their capabilities and help them **reach their maximum potential.** At RRI, we are trained to **identify these talents** and help you as a company aid your valued employees to grow, as they are your most valuable asset.

Therefore, with our coaching sessions, we can help you **identify where the the strengths and shortcomings** are and how we can help your employees get back on track giving their best to the company and getting the best for themselves as well.

## WHO IS THIS SERVICE FOR?

This business coaching service is tailored for any company that detects some **issues/shortcomings** with certain employees or believes in **special talents** to grow their potential.



## WHAT YOU WILL GET



1 Meeting with the  
Manager



3 Meetings with the  
Individual to be  
Coached (Coachee)



1 Conclusive Meeting  
with the Manager



A Comprehensive  
Report

# OUR COACHES

RRI



## **Amr Alaa, Corporate Coach**

Amr uses the meta-coaching methodology to help coaches connect to their guidance system and design their own solutions. Amr coached senior managers in big corporations such as Saudi Aramco, Nestle and Philip Morris. Amr is a certified coach by Gallup.



## **Mohamed Nagy, Career Coach**

Mohamed Nagy has been working at RRI in the Business development team for more than 3 years, and has been involved in sales work, design and delivery of experiential training courses for the likes of: Exxon Mobil, Orange, Ahram Beverages, CIB, Coca Cola, and Mercedes.

Keen on learning and personal development, Mohamed decided to attend and complete the "Certified Career Coach" program by Intellect Egypt under the umbrella of the "ICF" International Coaching Federation.

# OUR COACHES

RRI



## **Nader Sameh, Master Trainer & Coach**

Nader is the managing director of RRI, has myriad certificates which include: Relate and Enrich (Relationship & family counseling), Growing Leaders Master trainer, ISLT - TOT (international sports leadership training), Red Rock International master trainer and a masters degree in philosophy, counseling and religion with RTS in Orlando Florida. He has over 10 years experience in career advising, conflict handling, recognizing talents in corporates and coaching entrepreneurs struggling in early years. Nader boasts a client list that includes reputable names as: Ahram Beverages, Mobinil, National Bank of Egypt, AUC, GUC, BUE, MSA and MIU.



## **Sandra Farahat, Life Coach**

Sandra is currently a Business Development Senior Specialist at RRI. Sandra has led many large-scale training events and prepared and delivered many classroom and team building activities including coaching, teamwork & communication, leadership and strategic thinking. Sandra has pursued a Life Coaching certificate, attending life coaching journey with Intellect Egypt (International Coach Federation representatives in Egypt).



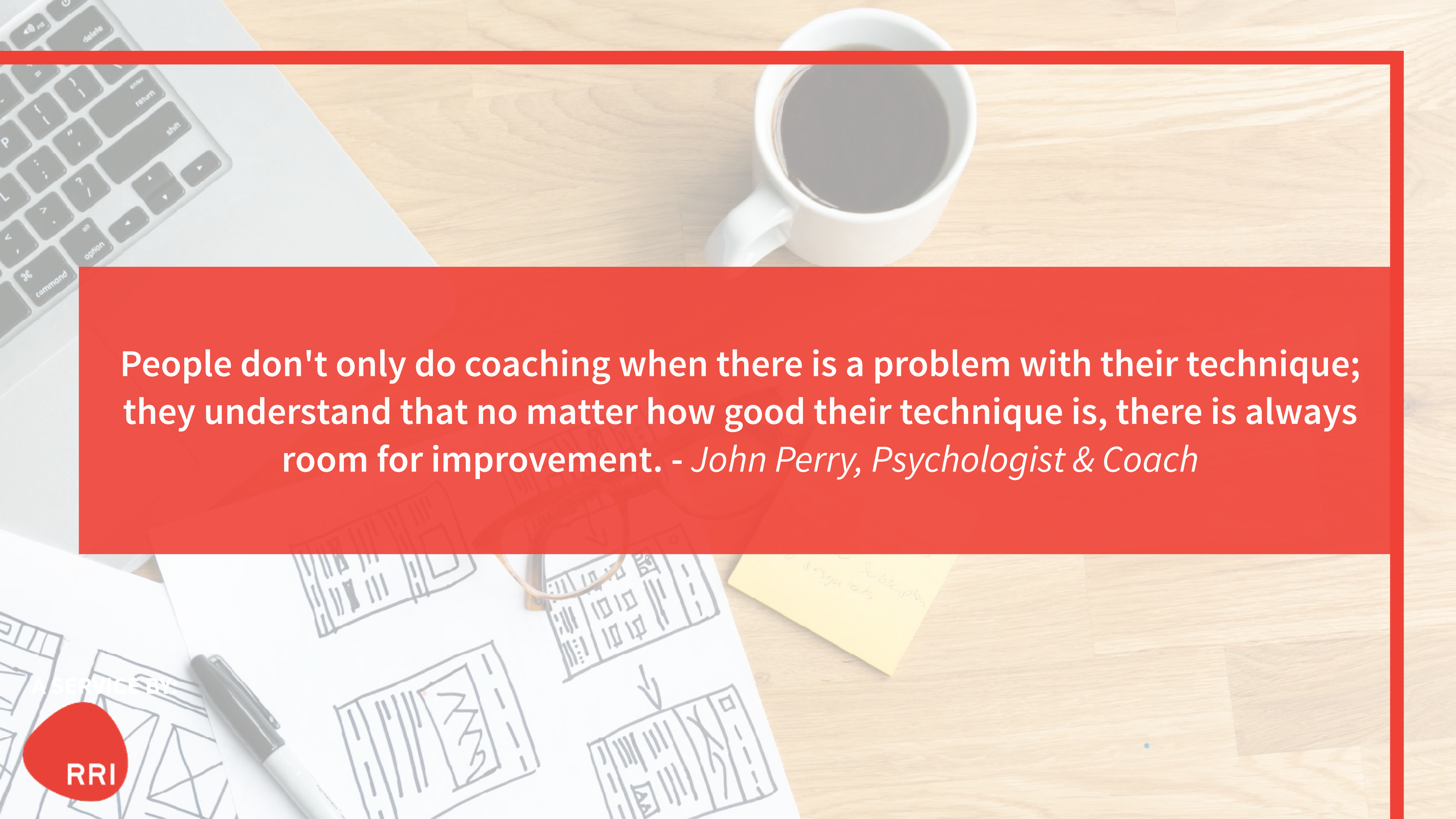
## WHAT OUR CLIENTS SAID ABOUT OUR COACHING

“Managers have realized the power of these **employee-focused sessions** – coaching ABC employees has driven **high performance** & has had a **transformational impact** both on the **individuals** and the **business**”.

*- Al Ahram Beverages Co.*

# COACHING TOPICS PREVIOUSLY DONE WITH CLIENTS

- Creating **vision/mission statements**
- Getting a **better start** to his/her job
- **Getting things done** in more efficient time
- Clarifying **objectives** and **expectations** between team managers and subordinates
- Understanding and working through **cultural differences**

A top-down view of a wooden desk. In the upper right, a white coffee cup filled with dark liquid sits on the desk. To the left, a portion of a silver laptop keyboard is visible. In the lower half, a white notebook is open, showing several hand-drawn sketches of rectangular boxes with internal lines and arrows, suggesting a process flow or design. A yellow sticky note with handwritten text is also visible on the desk. A red semi-transparent banner is overlaid across the middle of the image, containing white text.

People don't only do coaching when there is a problem with their technique; they understand that no matter how good their technique is, there is always room for improvement. - *John Perry, Psychologist & Coach*

A SERVICE BY

RRI

# CONTACT US TO BOOK

Call us:

+2 01270111166

+2 0223096209

Facebook:

/RedRockInternational

Instagram:

@RedRockEgypt

Email us:

[egypt@redrockinternational.com](mailto:egypt@redrockinternational.com)

Website:

[www.redrockinternational.com](http://www.redrockinternational.com)

A SERVICE BY:

